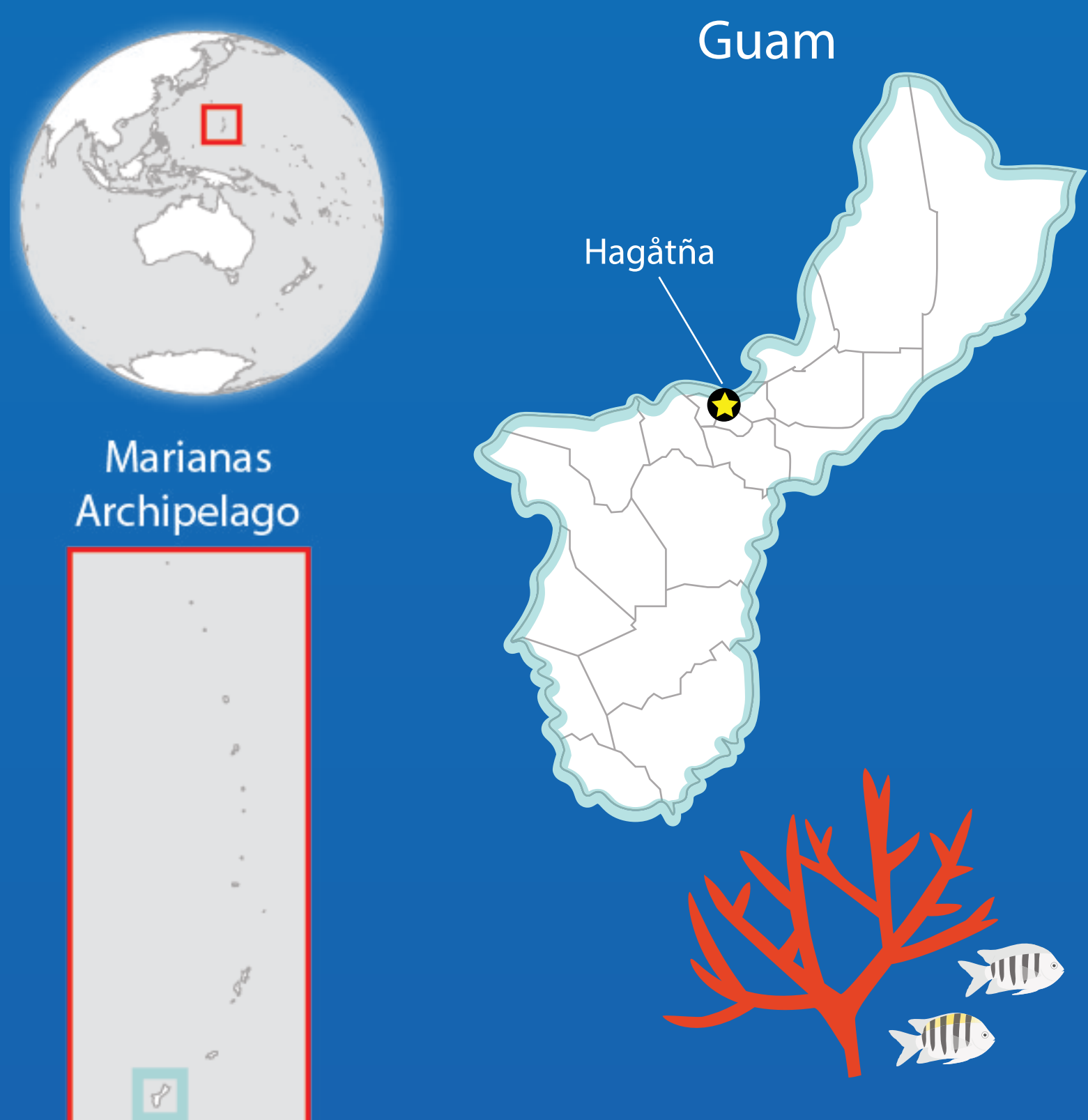


CORAL REEFS & COASTAL COMMUNITIES

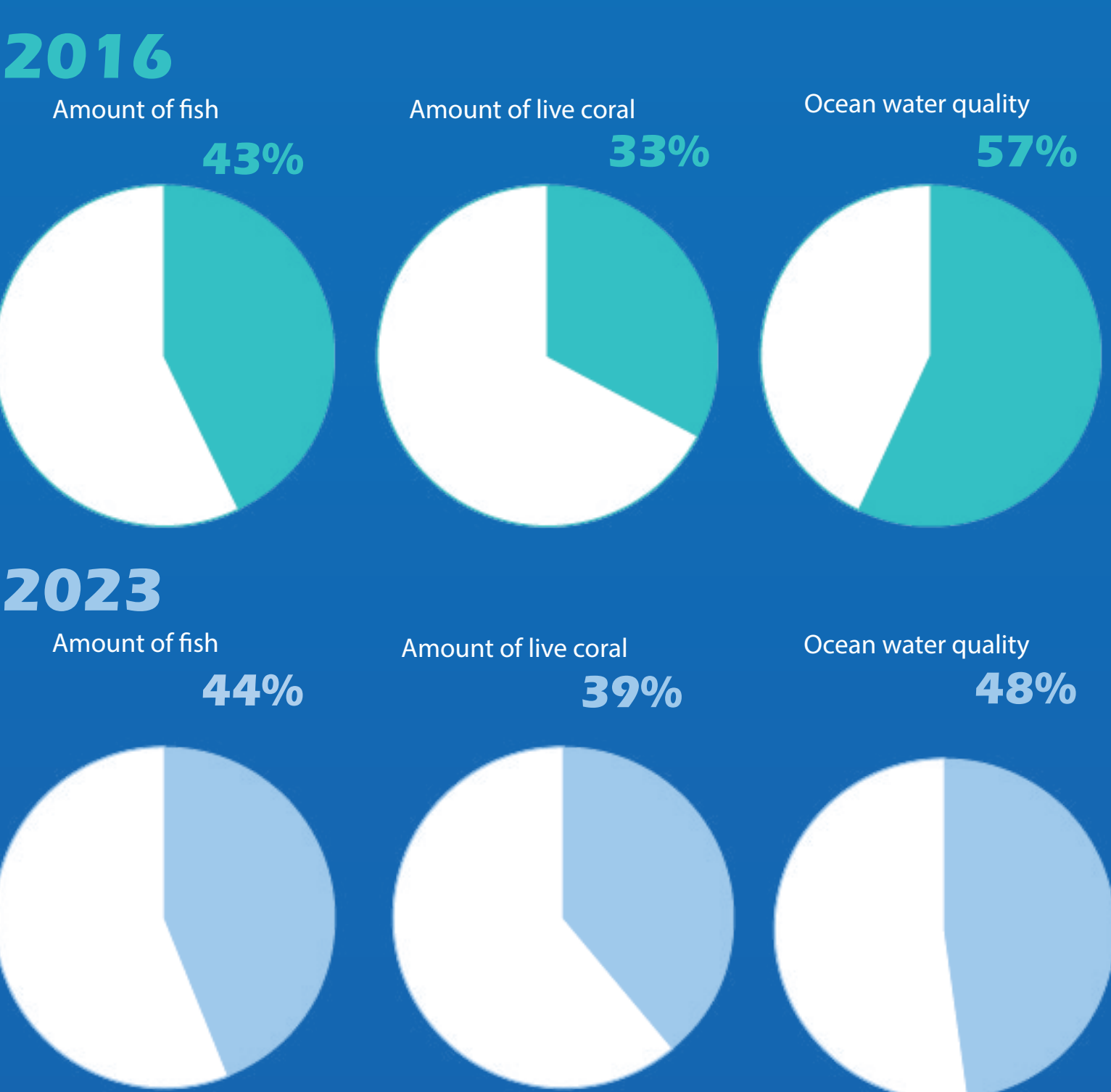
Trends from Socioeconomic Surveying in Guam

NOAA's Coral Reef Conservation Program monitors the biological, socioeconomic, and climate conditions of U.S. coral reefs and communities through the National Coral Reef Monitoring Program (NCRMP). The Socioeconomic Component of the NCRMP collects and monitors knowledge, attitudes, and perceptions of coral reefs and coral reef management; human use of coral reef resources; and demographics of the populations living in coral reef areas. The trends shown below are based on survey results between the first (2016) and second (2023) monitoring cycles conducted in Guam.



Perceived Current Resource Conditions

Residents were asked how they perceive the current condition of certain marine resources in Guam. The percentage of residents who believed that the amount of fish, amount of live coral, and the ocean water quality is good is shown below.

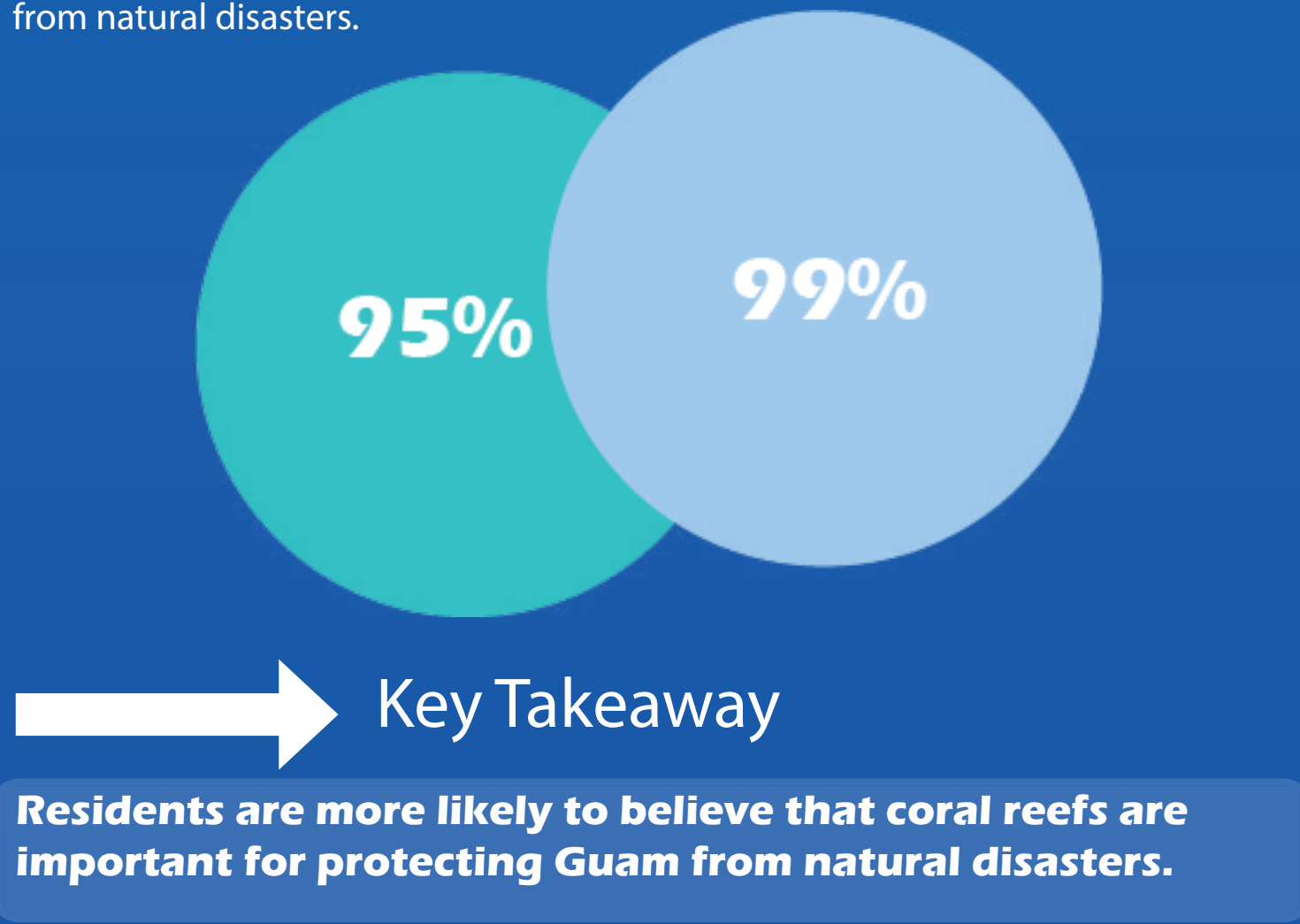


Key Takeaway
More residents believed that the amount of live coral has increased and that ocean water quality has decreased.

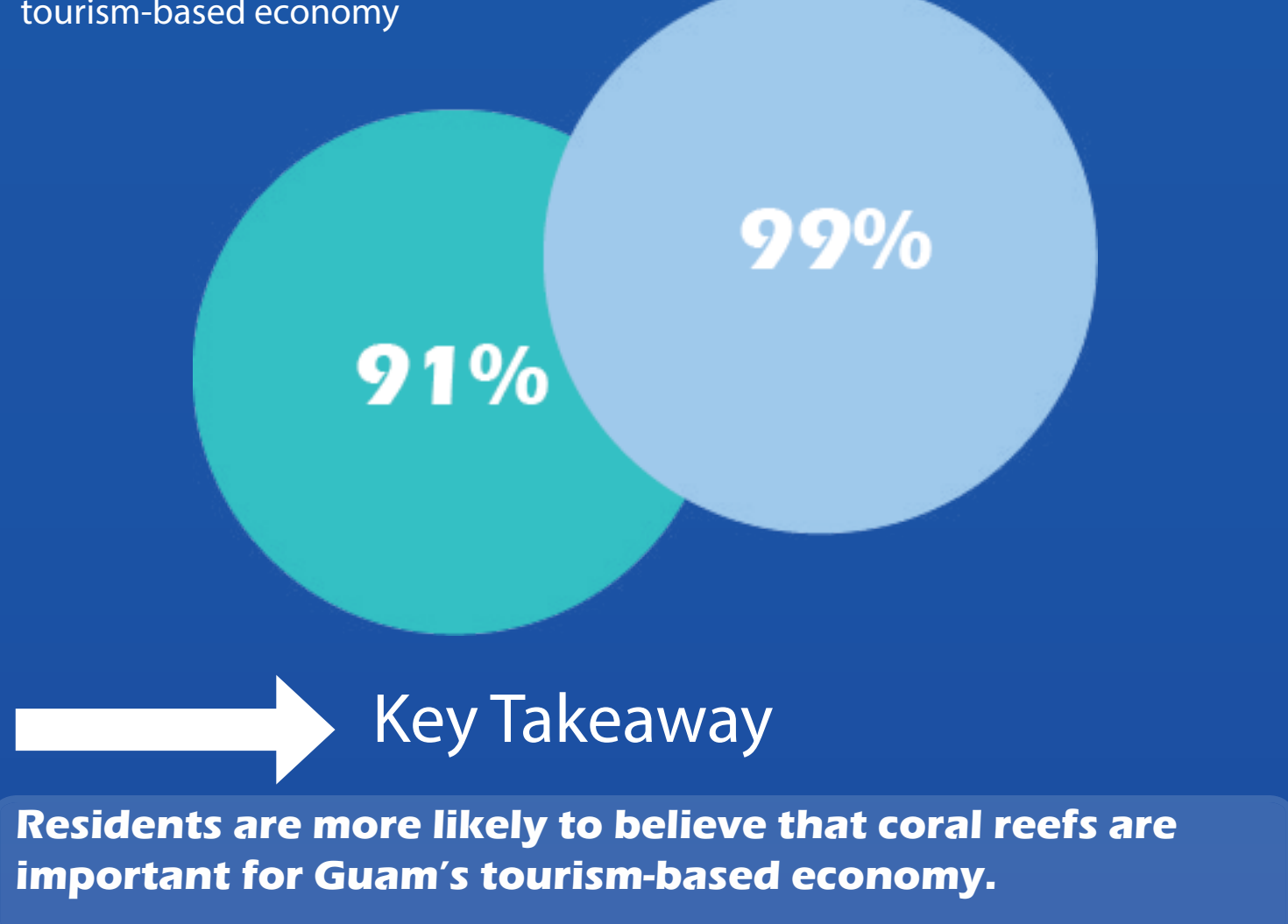
Importance of Coral Reefs

Residents were asked whether they believed that coral reefs were important to the following:

Coral reefs are important for protecting Guam from natural disasters.

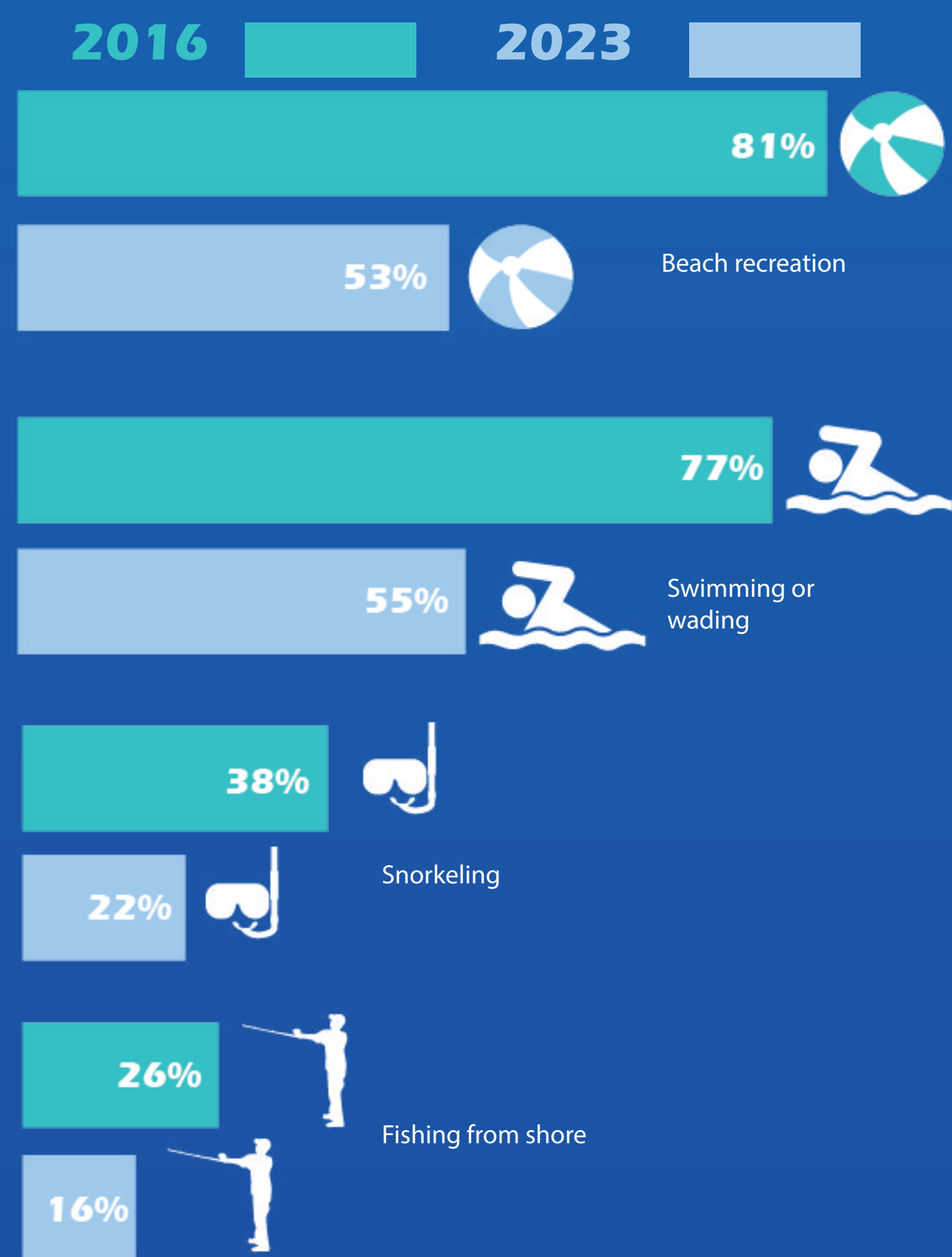


Coral reefs are important for Guam's tourism-based economy



Activity Participation Rates

Residents were asked for their participation in certain marine-based recreational activities. Activity participation rates for some of these activities are shown below.

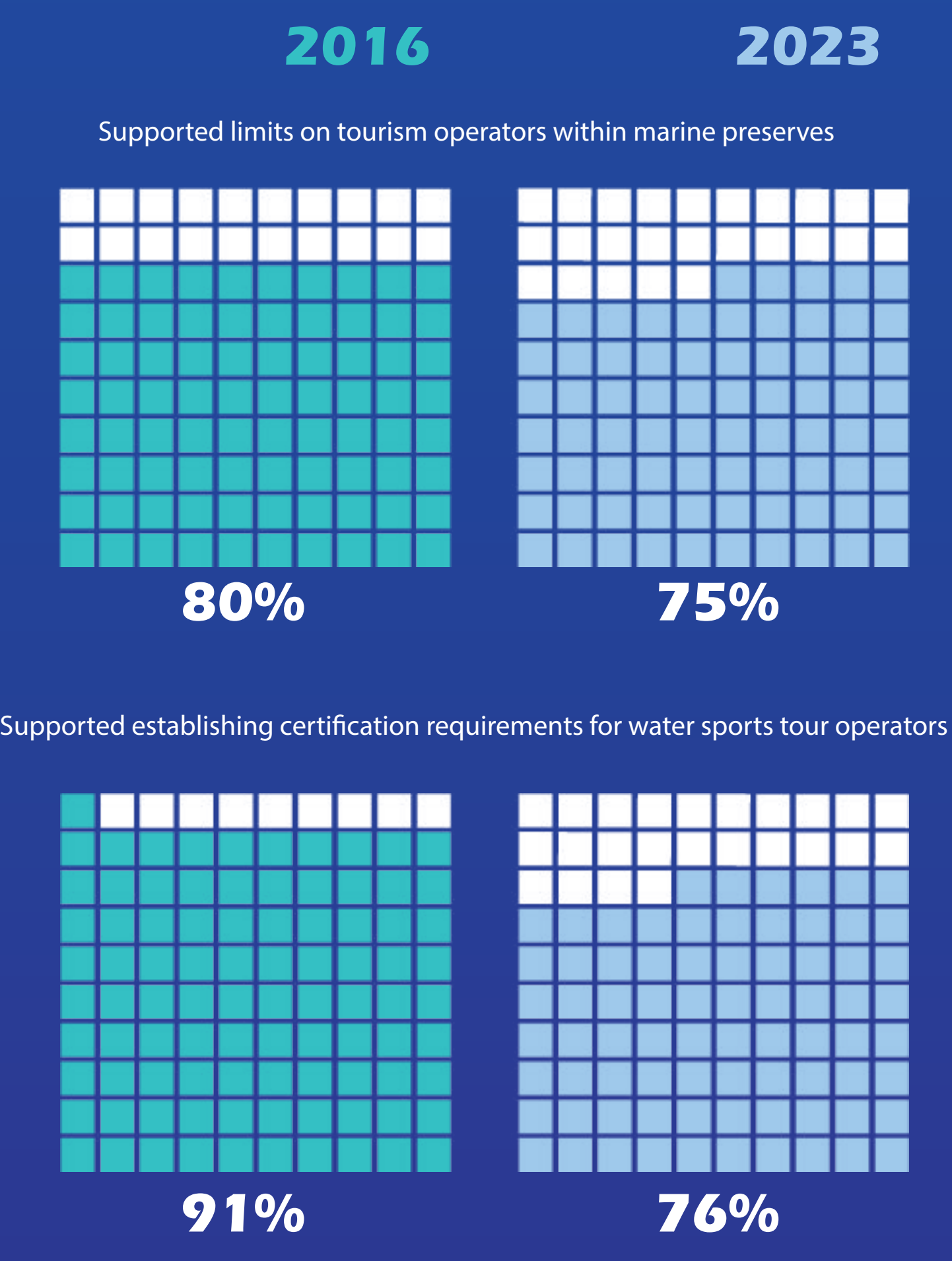


Key Takeaway
Participation in various marine-based recreational activities largely decreased.

Resident familiarity with marine protected areas and marine preserves increased by 18% in 2023

Support for Management

Residents were asked if they opposed or supported various management strategies. The percentage of residents who supported or strongly supported is shown below.



Key Takeaway
Support for management strategies slightly decreased, but remained high overall.

Threat familiarity

Residents were asked for their familiarity with potential threats to coral reefs. Most and less familiar threats are shown below.



Key Takeaway
Residents were most familiar with the threats of pollution and marine litter in both years.