



# It's Our Best Yet

Good data takes time. NOAA has taken a phased approach. Here's a rundown of the data currently available.

## INITIAL 1-METER PRODUCT



IMPERVIOUS

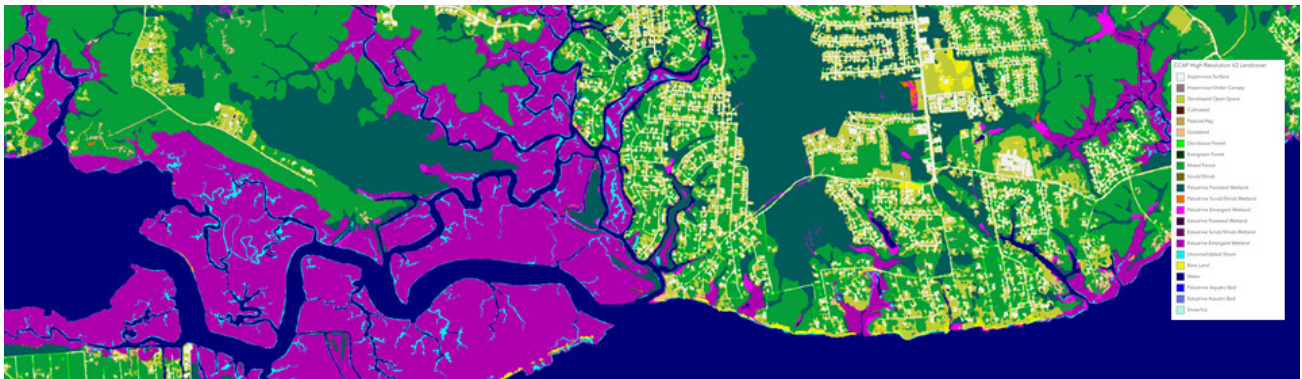
CANOPY

WATER

The first round included mapping of impervious surfaces, woody vegetation canopy, and water based on 2020 to 2022 imagery. This product, released in January 2024, is available for most coastal areas nationwide, including Alaska, Hawai'i, and the Pacific and Caribbean territories.

## REFINED AND EXPANDED MAPPING

These data products offer increased accuracy and greater detail, featuring up to 20 land cover categories, including several wetland types. View the release schedule on the high-resolution land cover web page or contact us at [coastal.info@noaa.gov](mailto:coastal.info@noaa.gov) with questions.



## MAKING A DIFFERENCE

This effort will empower communities to use the high-resolution data to improve stormwater management, protect homes and businesses from flooding, inform wetland restoration projects, and more.



**NOAA OFFICE FOR COASTAL MANAGEMENT**  
[coast.noaa.gov/digitalcoast/data/ccaphighres.html](https://coast.noaa.gov/digitalcoast/data/ccaphighres.html)