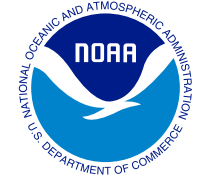


# HIGH-RESOLUTION LAND COVER MAPPING.

## Faster. Cheaper. Better.



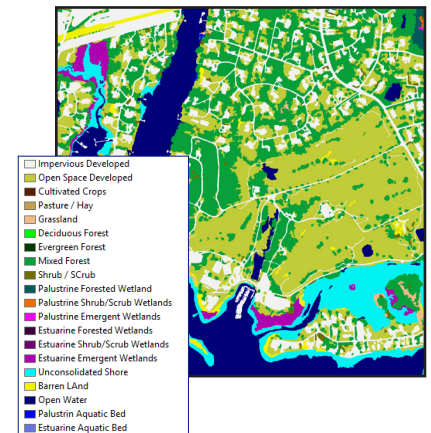
For over 20 years, NOAA has provided C-CAP land cover data, at a 30-meter resolution, for our nation's coasts. This comprehensive product is made even better with three new high-resolution options.

### LAND COVER DATA

High-resolution data supports a wider range of applications, but it can be expensive. That's why NOAA is cultivating state, local, and federal partnerships to cost-share each effort. Partners get the detailed data they need at a greatly reduced price, and NOAA's participation ensures high-quality end products and a smooth production process. All data will be published via the Digital Coast ([C](#)) and be free for all to use. The goal is to create a national data set that is updated regularly.

#### Technical Specifications

- Detailed land cover maps at 1-meter resolution
- Standardized 16 to 20 land cover categories
- NOAA anticipates updating the data every 4 to 6 years



### IMPERVIOUS SURFACE DATA

NOAA is working with private-sector firms, to provide detailed maps focused on impervious features—buildings, roads, pavement, parking lots, and driveways. Data can be purchased at a reduced cost with options for regular updates.

#### Technical Specifications

- Data derived from 15-30 centimeter imagery
- Includes at least three impervious feature types
- Regular updates are available through a subscription

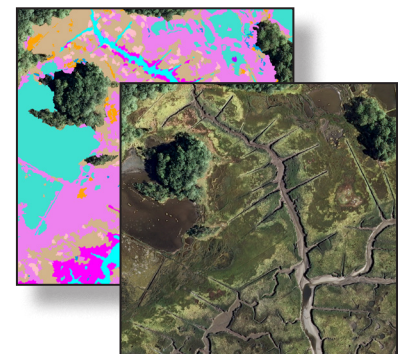


### SALT MARSH HABITAT DATA

For wetland-oriented projects, NOAA offers maps that cover multiple categories. The new maps include additional wetland categories: pannes, pools, high marsh, low marsh, and potentially, individual species (including invasive species).

#### Technical Specifications

- Vector-based data derived from lower tide imagery
- Includes at least 12 feature types
- Updates possible with additional funding

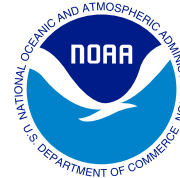


### DIGITAL COAST

Explore these partnership options by contacting  
[Nate.Herold@noaa.gov](mailto:Nate.Herold@noaa.gov)

# DETAILS

## HIGH-RESOLUTION LAND COVER



### BENEFITS



- Cost savings
- High quality and consistent
- Updated regularly

When it comes to data, there's an old saying: "faster, cheaper, better—you can have two of the three." With these NOAA options, you can have all three, thanks to the vetting process, experience, and partnership approach NOAA brings to the table.

### USE CASES



#### COMMUNITY PLANNING AND DEVELOPMENT

- Impervious cover and growth monitoring
- Land use planning and parcel analysis
- Building footprints and access locations
- Open space planning and assessment
- Urban forestry and street trees



#### FLOODING IMPACTS

- Infrastructure exposure assessment
- Future risk management
- Community Rating System credits
- Hydrodynamic modeling



#### WATER QUALITY AND STORMWATER MANAGEMENT

- Modeling and assessment
- Planning and mitigation
- Green infrastructure and design



#### WETLANDS MANAGEMENT

- Marsh condition and trends
- Habitat assessment and connectivity
- Conservation and restoration planning
- Resilience assessment



#### CARBON ACCOUNTING

- Sequestration and storage estimates
- Carbon credits