



August 2023

New Data, New Resources

Office for Coastal Management

- NOAA's [Climate Resilience Regional Challenge](#) funding opportunity is now open. Letters of intent are due August 21, 2023. Explore [additional resources](#); then learn more in the [frequently asked questions](#).
- Funding opportunities through the [Bipartisan Infrastructure Law](#) for the [Coastal Zone Management Programs](#) and [National Estuarine Research Reserves](#) are now open.
- Submit photos from national estuarine research reserves to the [National Estuaries Week photo contest](#) before August 31, 2023.
- Explore the [list of state impact stories](#) and use them in your communication efforts. The most recent stories are at the top.

Digital Coast

- **Story from the Field** – [Using Ocean Data for Aquaculture Siting](#)
- **Story from the Field** – [Assessing a South Carolina City's Urban Heat Areas and Street Canopy Equity](#)
- **Quick Reference Guide** – [Grant Proposal Development Resources](#)
- **Interactive Module** – [Mapping Repetitive Flood Risk](#)
- **Data** – [See the list of new and updated data sets.](#)

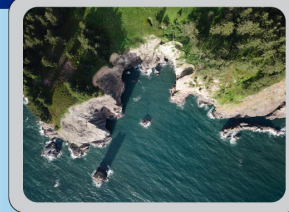
Products You Can Use

High-Resolution C-CAP Land Cover Data

The Product: Get a breakdown of land cover types—wetlands, forests, impervious surface, and more—for your area with an apples-to-apples comparison using the same high quality, local-level data.

Why Nate Chose It: This is an exciting,

STAFF PICKS!



**Meet
NATE HEROLD,**
physical scientist
and land cover
expert.

new offering in our C-CAP product line. Developed using advanced artificial intelligence and expert-based classification, these are our highest quality products yet. These data build upon the history of our tried and true regional land cover mapping, which is still a great historical account of change, but provides local detail that

opens a whole new world of applications to our users that our 30-meter data can't support. Our current offerings cover most coastal areas of the country, and we are always looking for additional partners to add statewide coverage.

Tech Topics

Flood Mapping

There are many possible approaches and steps when it comes to mapping current and future inundation. Techniques and data involved include sea level rise scenarios and projections, elevation and water level data, converting between vertical datums, creating and managing digital elevation models, mapping inundation model output, developing inundation zones, and mapping sea level rise using modeled tidal surfaces. It is important to get the data correct before developing mapping products for various end users, and to understand, and explain, the uncertainties involved.

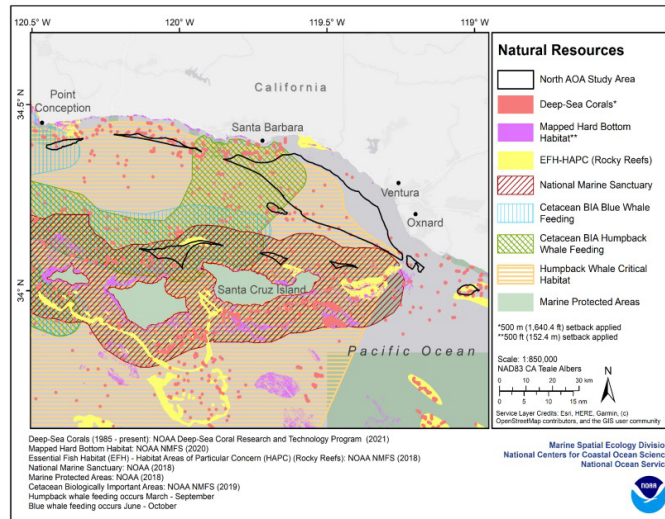
Consider taking this NOAA class, [Coastal Inundation Mapping](#), to get the training needed for these tasks.

Stories from Your Peers

Increasing Aquaculture Potential in Federal Waters

An executive order required NOAA to identify, over the next five years, at least 10 aquaculture opportunity areas in various regions of the U.S. The first step was the development of [two marine spatial aquaculture atlases](#) focused on the Southern California Bight and the Gulf of Mexico. Over a dozen data sets from

Natural and Cultural Resources



[MarineCadastre.gov](https://marinecadastre.gov) were used for this analysis, including data about oil and gas pipelines, wells, artificial reefs, submarine cables, and vessel traffic.

Also included: links to the custom OceanReports developed for each area, which were generated within the MarineCadastre tool. These reports provide the most current data available. Does this sound like something your region needs?

- [Read the full story.](#)

Tips from the Digital Coast Academy

Implementation is a Work in Progress

The Wisconsin Coastal Management Program knows that a major barrier to implementing green infrastructure is existing municipal codes and ordinances. They developed [a workbook](#), along with an accompanying community engagement process. Together with a small coastal community, they put it into practice and shared lessons learned.

One thing realized: codes and ordinances aren't the only barriers to natural infrastructure. Some people don't believe it's the right option, or have operation and maintenance concerns. Some communities have aesthetic or cultural preferences they think are at odds with these projects. Know it's a marathon, not a sprint.

Find the full list of helpful tips in [the case study](#). [Email us](#) with any questions.

Fast Facts



Land Cover Change



America's coastal lands:
25 percent of the contiguous U.S., being developed
twice as much as the rest of the country.

Amount: Almost 50 million acres changed over a 20-year period.

This is just one of the many coastal management [fast facts and graphics](#) provided for your use. [Read the list](#) and let us know if there are others you'd like to see added.

Feedback? Please!

This newsletter is created for coastal professionals dedicated to keeping coastal communities safe and productive. Please provide any feedback you may have to coastal.info@noaa.gov

NOAA's Digital Coast



NOAA Office for Coastal Management

Want to change how you receive these emails?
You can [update your preferences](#) or [unsubscribe from this list](#).



Twitter



Facebook



Instagram



Website