



March 2023

## New Data, New Resources

### Office for Coastal Management

- Explore the [list of state impact stories](#) and use them in your communication efforts. The most recent stories are at the top.

### Digital Coast

- **Tool** – [National Stormwater Calculator](#)
- See the list of [new and updated data sets](#) from NOAA's Digital Coast.

## Upcoming Training

### March

- [Seven Best Practices for Risk Communication](#). March 8, 2023, 2 to 3:30 p.m. Eastern. Register [here](#).
- [Economic Guidance: Introduction to Economic Analyses and Valuation](#). March 15, 2023, 2 to 3:30 p.m. Eastern. Register [here](#).
- [Economic Guidance: Pathways to Valuing Ecosystem Services](#). March 29, 2023, 2 to 3:30 p.m. Eastern. Register [here](#).

## Staff Picks

### U.S. Interagency Elevation Inventory

**The Product:** [This tool](#) provides rapid and easy access to an amazing compilation of topographic and bathymetric data sources. Elevation data are critical for many applications,

and being able to visualize the spatial extents and understand the various data set characteristics from one website is very powerful indeed!

**Why Jamie Chose It:** The inventory is exceptionally easy to use, and most folks only need a quick orientation to get started. This tool includes a comprehensive inventory of topographic (land elevation) and bathymetric (seafloor elevation) data, most of which is available for download from NOAA's Digital Coast.



# STAFF PICKS!

**U.S. Interagency Elevation Inventory**

Start searching to begin.

City, county, state, address (Lat, Long) (Sea, USGS) (NET) (HUC)

**MEET  
Jamie Carter,  
our GIS lead in the  
Northeast.**

## Tech Topics

### Finding the Economic Impact of Your Working Waterfront

When considering the future of your waterfront, documenting jobs and wages is important, yet these numbers are not always easy to come by.

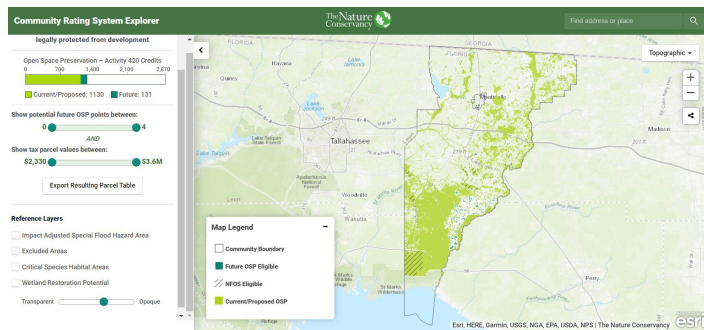
The Digital Coast can show you where to find them. The Economics: National Ocean Watch (ENOW) section of the Digital Coast provides national, state, and county economics numbers. If you need to generate an economic analysis at even finer local levels, a recent addition to the website provides the methodology and case studies that can help. Yes, you can do this.

To get started, consider hosting a [virtual training](#)—or maybe take a look at this [publication](#). You can also email us at [coastal.info@noaa.gov](mailto:coastal.info@noaa.gov) with any questions.

## Stories from Your Peers

### Identifying Open Space to Improve Resilience and Earn Community Rating System Credit

Communities within a floodplain can participate in the National Flood Insurance Program's Community Rating System to identify and implement strategies that can improve flood resilience and earn credit to lower their flood insurance premiums.



Using NOAA’s [GIS workflow](#), a self-guided training resource, managers in the Gulf of Mexico were able to identify eligible open space in their floodplains that could qualify for the rating system. They input this information into the Nature Conservancy’s [explorer](#) and determined which areas could receive the most credits and therefore the highest deductions.

- Read the [full story](#).

## Tips from the Digital Coast Academy

### If You Build It, They Might Not Use It

Picture this: You did the research, got the results, created products, and now you’re excited to share this bounty with communities. And then, nothing. Most of the feedback seems focused on “this would have been really helpful if it was just a little different.”

That’s what’s so wonderful about collaborative science. The whole point is to get together the various groups involved in research from start to finish to advance understanding and get usable results. A crucial step of this process is engaging and being responsive to the intended users. Sharing ideas and exchanging knowledge helps build a stronger project. Collaborative science projects often need to adapt plans to better meet the evolving needs of end users.

Learn more about the collaborative science process in [this guide](#). Reach out with any questions at this address: [coastal.info@noaa.gov](mailto:coastal.info@noaa.gov).

## Fast Facts

# GREATER THAN GREAT

Almost 30 million people, earning \$1.3 trillion,  
enjoying 6 QUADRILLION gallons of water!

*The Great Lakes are EXTRAORDINARY*

*This is just one of the many coastal management [fast facts and graphics](#) provided for your use. [Read the list](#) and let us know if there are others you'd like to see added.*

#### Feedback? Please!

This newsletter is created for coastal professionals dedicated to keeping coastal communities safe and productive. Please provide any feedback you may have to [coastal.info@noaa.gov](mailto:coastal.info@noaa.gov)

*NOAA's Digital Coast*



*NOAA Office for Coastal Management*

Want to change how you receive these emails?  
You can [update your preferences](#) or [unsubscribe from this list](#).



Twitter



Facebook



Instagram



Website