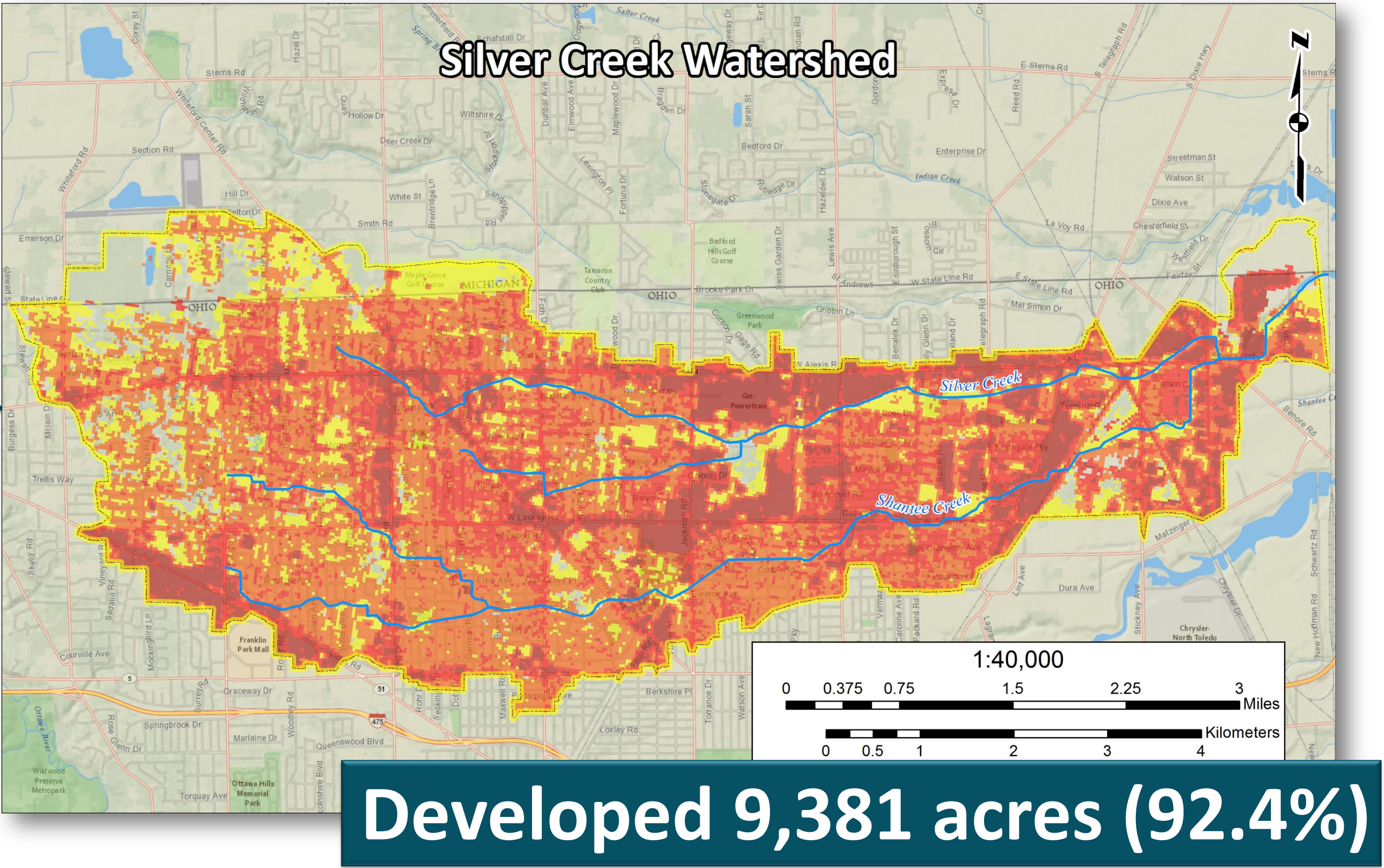


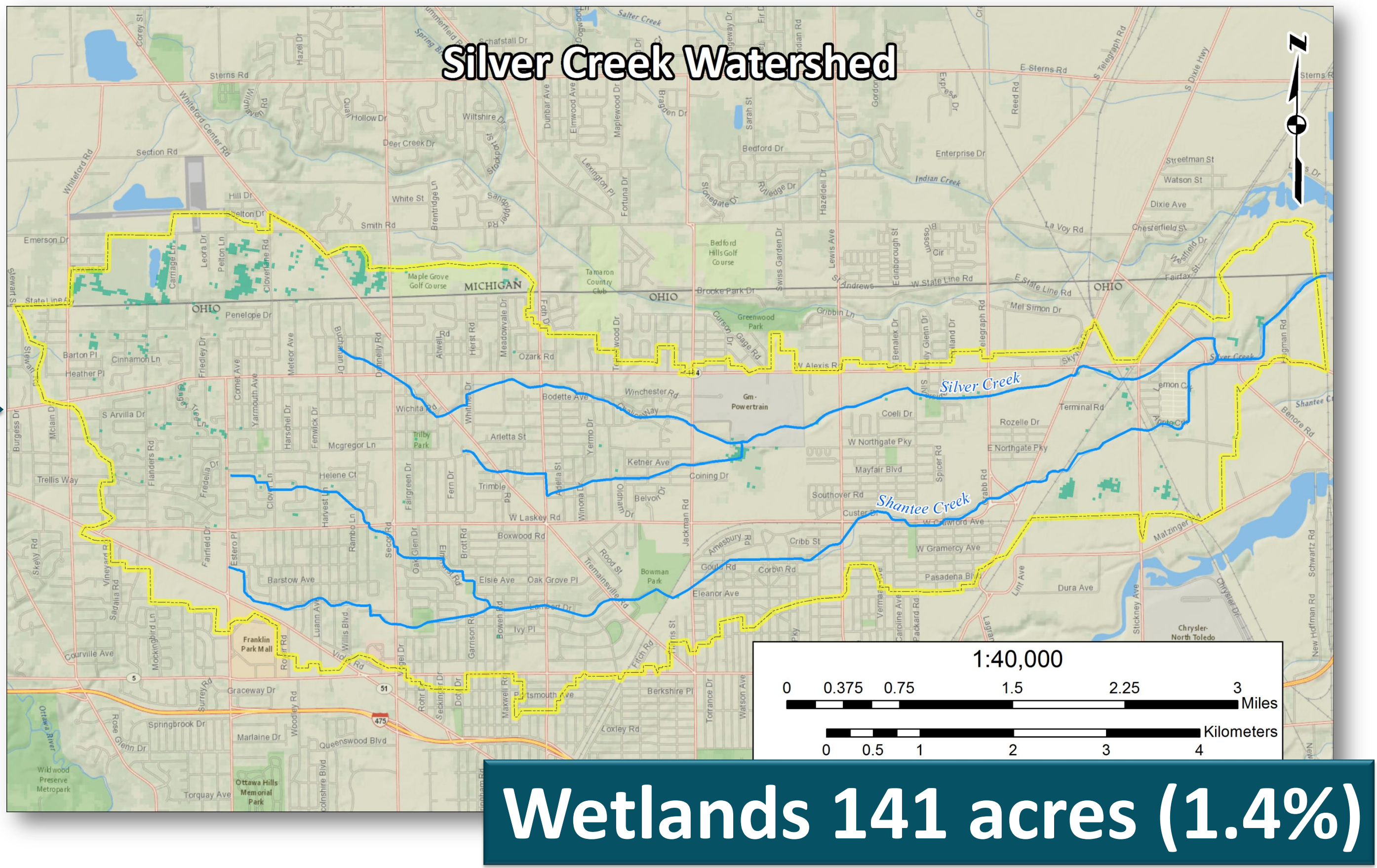
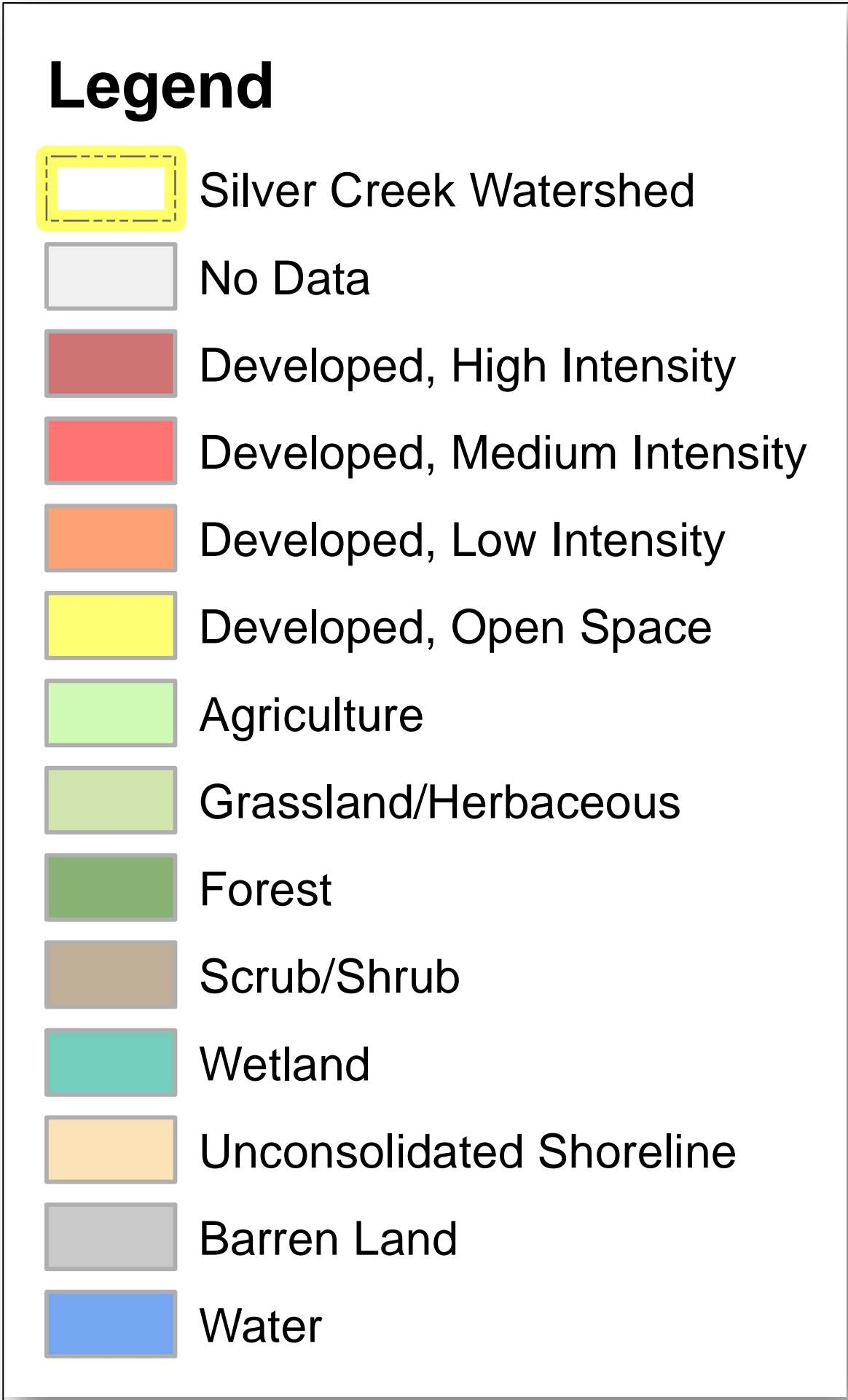
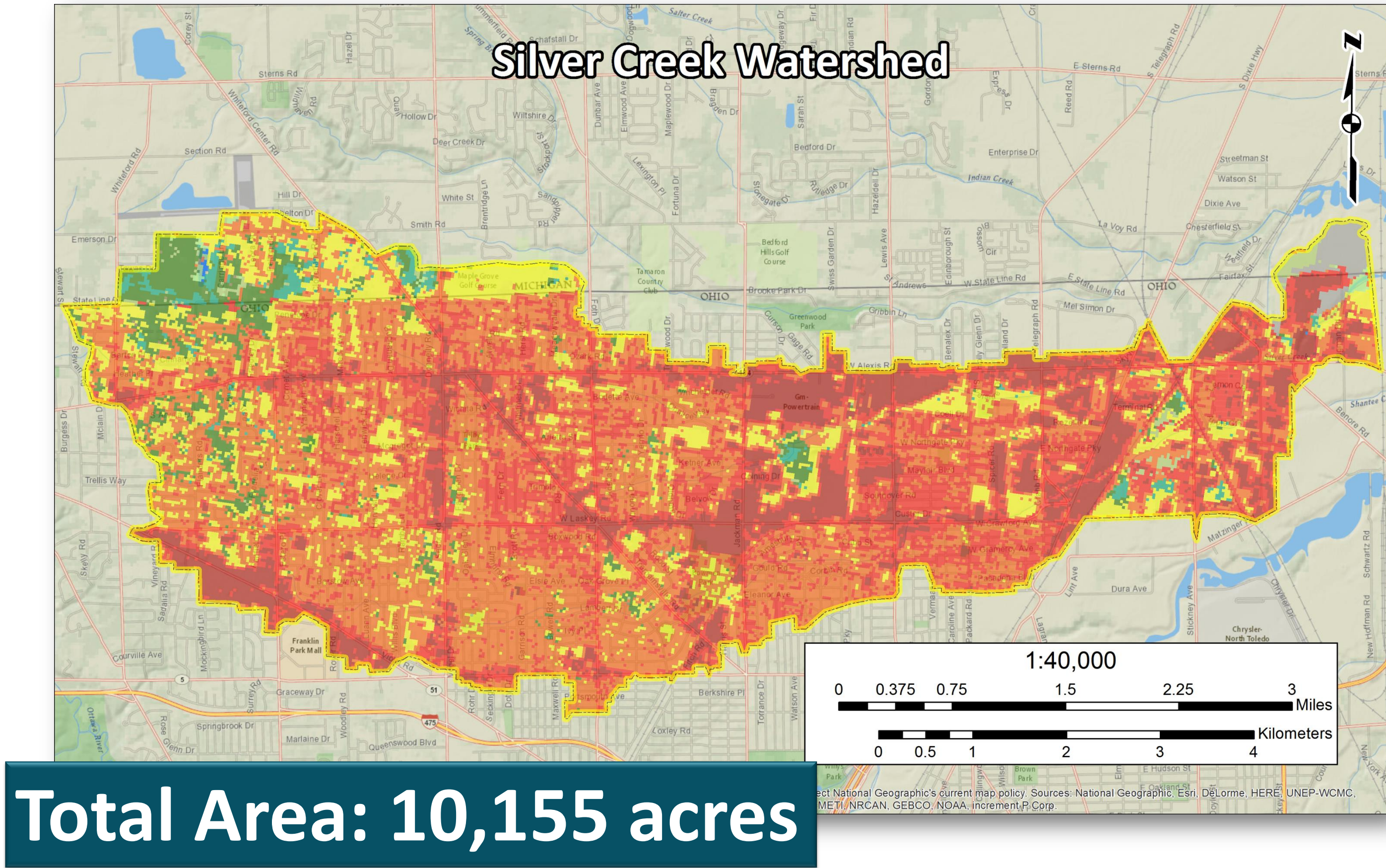
CURRENT DEVELOPMENT, FOREST, & WETLANDS

Land Cover: Then and Now

Land Cover Type	1985 (acres)	2010 (acres)	% Change
Developed	8723	9381	6.48%
Forest	624	451	-1.70%
Wetlands	149	141	-0.08%
Other	659	181	-4.71%



2010 Land Cover



CHANGE IN LANDCOVER: 1985 to 2010

