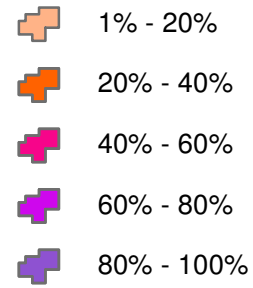


Freshwater Inputs: Impervious and semi-pervious surfaces

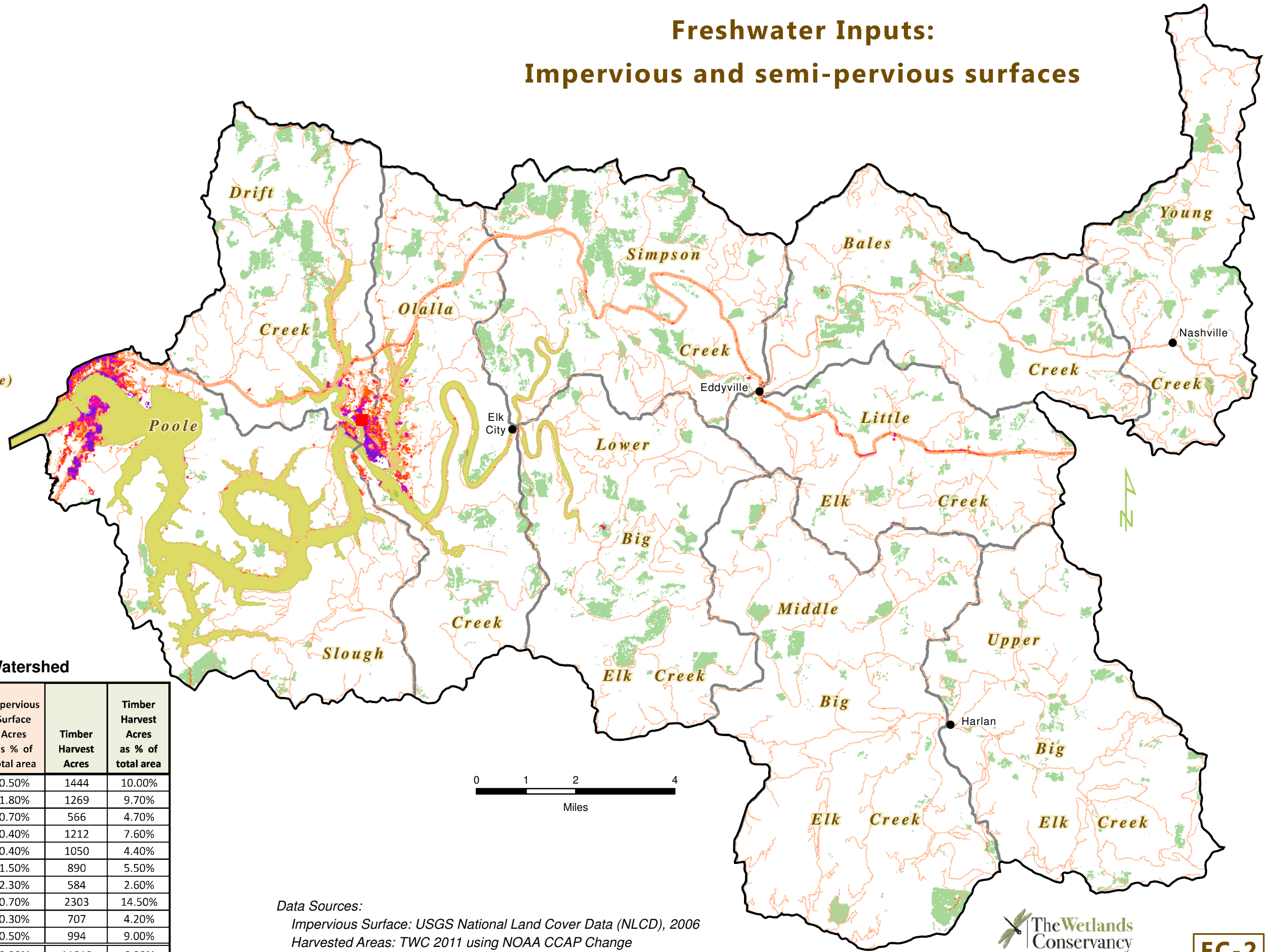
Percent impervious surface area
(within 30 meter square pixel)



HUC6 Watershed (*Watershed Name*)

Estuary Study Area

Semi-pervious surface:
Timber Harvest (from 1996 to 2006)



Summary by HUC6 Watershed

HUC6 Name	Acres	Impervious Surface Acres	Impervious Surface Acres as % of total area	Timber Harvest Acres	Timber Harvest Acres as % of total area
Bales Creek	14388	70	0.50%	1444	10.00%
Drift Creek	13101	236	1.80%	1269	9.70%
Little Elk Creek	11939	89	0.70%	566	4.70%
Lower Big Elk Creek	15954	64	0.40%	1212	7.60%
Middle Big Elk Creek	24144	88	0.40%	1050	4.40%
Ollala Creek	16069	246	1.50%	890	5.50%
Poole Slough	22185	516	2.30%	584	2.60%
Simpson Creek	15851	110	0.70%	2303	14.50%
Upper Big Elk Creek	16769	57	0.30%	707	4.20%
Young Creek	11011	55	0.50%	994	9.00%
Total	161412	1531	0.90%	11019	6.80%

Data Sources:

Impervious Surface: USGS National Land Cover Data (NLCD), 2006

Harvested Areas: TWC 2011 using NOAA CCAP Change

Analysis, 1996-2001, 2001-2006



July 2011