

MarineCadastre.gov Quarterly News

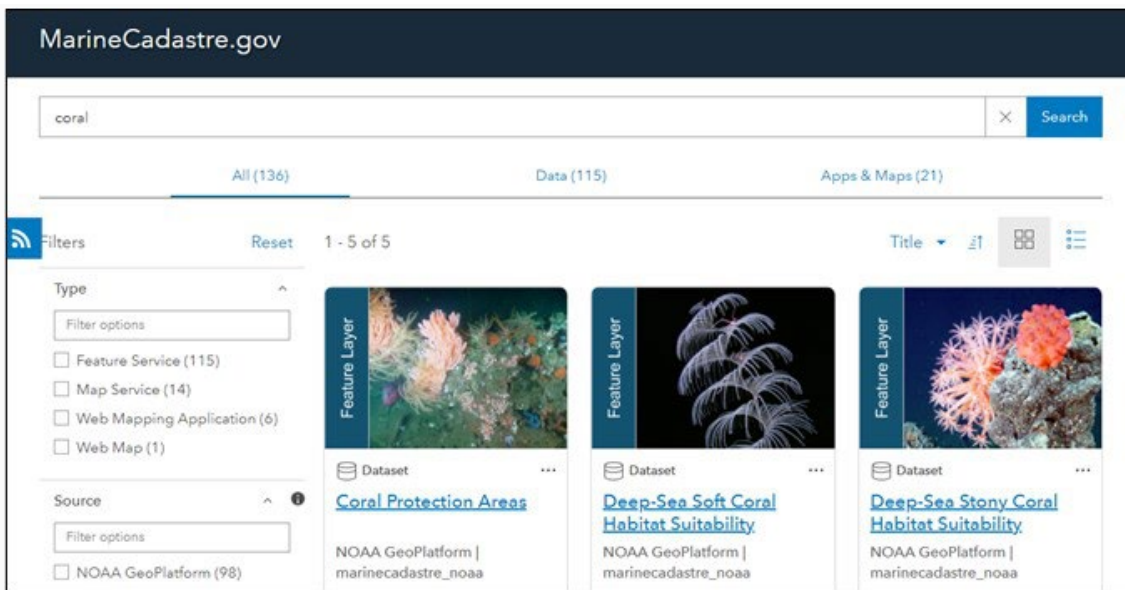


July 2023

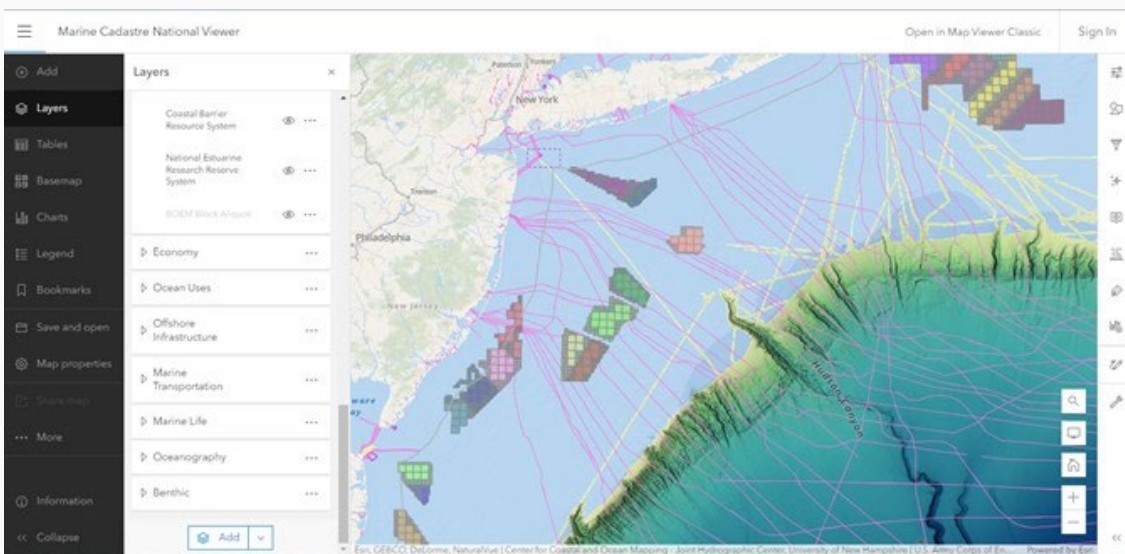
Live Now: New and Improved Access to MarineCadastre.gov Data

About six months ago, the MarineCadastre.gov team decided to take a big leap and began to move away from our custom-coded National Viewer and Data Registry to new implementations using Esri platforms. It is with great pleasure that we announce that those new applications are up and running! This is a big change, and we want to hear what you think. Please send your thoughts, feedback, and suggestions for improvement to marinecadastre@noaa.gov.

MarineCadastre.gov will continue to grow and change in the coming months as we incorporate new data and freshen our web presence.



MarineCadastre.gov Data Registry



MarineCadastre.gov National Viewer

Data Updates

Check out the most recent data additions below, and see what is coming soon. Access the data via our [feature services page](#) or via our traditional [map service page](#).

New data

- Aids to Navigation
- Anchorages
- Federal Consistency Geographic Location Descriptions
- Munitions and Explosives of Concern
- Offshore Wind Turbines
- AIS Vessel Transit Counts 2022

AIS Vessel Broadcast Points 2023 (January 1 to March 28)

- Atlantic Wave Climate
- Hawaii Wave Climate
- Pacific Wave Climate

On the horizon

- AIS Vessel Broadcast Points 2023 (April to June) – approximately September
- Aquaculture
- Submarine Cable Areas
- Tropical Cyclone Wind Exposure
- State Lateral Boundaries
- Alaska Wave Climate

We would love to hear what data you want or need.

Email your ideas to marinecadastre@noaa.gov.

Tech Talk

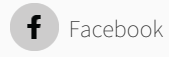
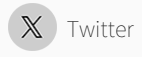
Tips and Tricks for the New Viewer and Registry

- National Viewer
 - Layers are off (not visible) by default. To turn a layer on, click the icon of an eye next to the layer's name. Note that scale dependencies are enabled for many layers. If the layer is grayed out in the table of contents, it is not visible at the current scale and you will need to zoom in.
 - If you are logged in to your ArcGIS Online account, you can save a copy of the current map. This will preserve any changes you have made to layers added or removed and any symbology changes as well. On the left panel, click "Save and open," then "Save as." You will be prompted to save the new map into your ArcGIS Online account.
- Data Registry
 - Download might not work or be in the correct format from the "Download" button on the explore view, the first map view you get from the data registry. We recommend downloading data from the item's details. Click "View Full Details" to see if the data is available for download and to learn more.

New Environmental Studies Program Hub!

The BOEM Environmental Studies Program (ESP) Hub is the latest outreach tool for biology, chemistry, physics, and social sciences research on over 50 topical and timely research themes addressing BOEM's most pressing offshore energy and minerals information needs. The ESP built the ESP Hub using ArcGIS Online, making ESP research more accessible through straightforward website navigation and an interactive web map experience. [Check it out!](#)

Stay connected



MarineCadastre.gov

[View this email in your browser](#)