

MarineCadastre.gov Quarterly News



October 2022

Welcome

Welcome to our new quarterly newsletter, where we will keep you updated on the latest data developments, updates to our tools, and upcoming events of interest. Please share this with others who might be interested, and have them [subscribe today](#).

Thanks,
Dave Stein on behalf of the MarineCadastre.gov team

Data Updates

The MarineCadastre.gov team has been primarily focused on data updates over the past six months. Check out the most recent data additions below, and see what is coming soon. A chronological [list of updates](#) is available, and you can access the new data via our [feature services page](#).

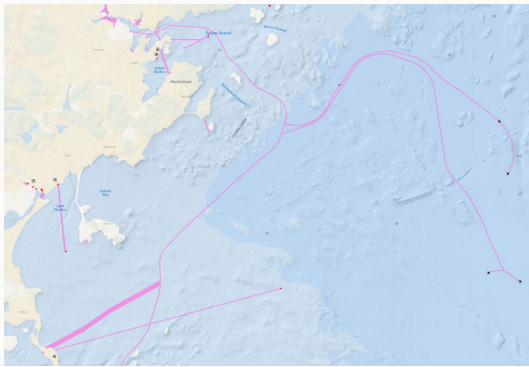
New data

- Artificial Reefs

On the horizon

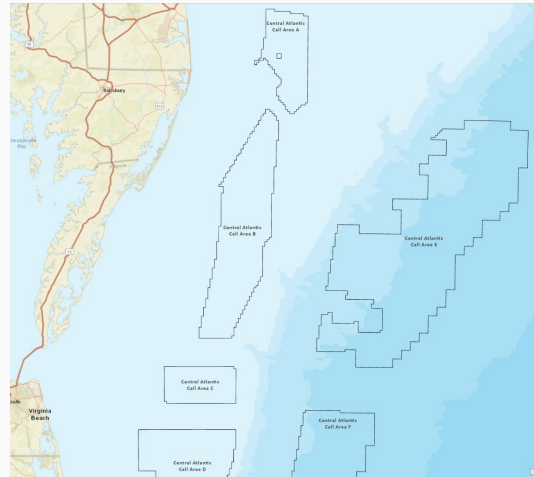
- BOEM Modeled Sand

- Atlantic Block Areas with Sand Resources
- Coastal Zone Management Act
- Formerly Used Defense Sites
- Military Operating Area Boundaries
- National Marine Sanctuaries
- Offshore Wind Energy Leases
- Offshore Wind Planning Areas
- Pipeline Areas
- Regulated Navigation Areas
- Vessel Routing Measures
- Wastewater Outfalls (national coverage) includes Outfall Pipes and Wastewater Facilities



- Danger Zones and Restricted Areas
- Offshore Oil and Gas Wells
- Offshore Oil and Gas Platforms
- Offshore Oil and Gas Leases
- Sand Resources
- Wave Climate

Make a data request. We can't support every new data request, but we're always interested in feedback for new data development. Email your ideas to info@marinecadastre.gov.



As we focus on creating and delivering the most up-to-date data, we are removing many data sets that are outdated, have been superseded, or are being hosted by local or regional portals. As a result, you may notice fewer layers appearing on the Data Registry and National Viewer. If you use our data or services and would like a preview of the data being retired, please review the [change log](#).

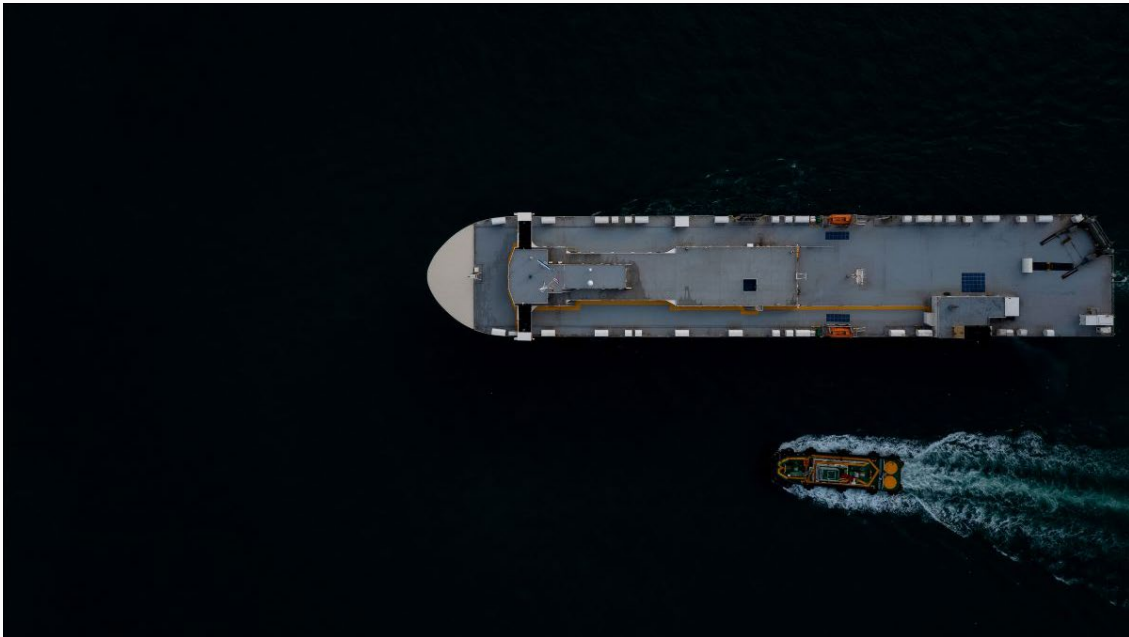
Websites and Application Updates

Coming soon: Updated National Viewer and Data Registry

The team has been working on a fresh look for the MarineCadastre.gov Data Registry and National Viewer. We are moving to an Esri open data portal page for the registry and an Esri web map for the National Viewer. With this change, there will be new URLs for you to bookmark (just for the registry and viewer— www.marinecadastre.gov is not going away).

AccessAIS Improvements

- Vessel traffic data is now available through June 2022 via [AccessAIS](#)
- The tool now allows users to download 2GB of data—a substantial increase!



Tech Talk: Now Delivering Feature Services and Geopackages

Our data team has been modernizing how we deliver our data downloads and web services. We will deliver many of our downloads as [GeoPackages](#), which is an open, non-proprietary, platform-independent, and standards-based data format for GIS delivered as a SQLite database container.

We are also delivering newly developed and updated data now as feature services. This format allows users flexibility when ingesting them in web clients or using them in their desktop apps. This is a process we are rolling out slowly. Not all data are available as feature services and Geopackages currently. Check back on our [data updates page](#) for the most recent data, and visit our [feature services page](#) as we add new services each month.

Registration for GeoTools will open November 2022!

coastalgeotools.org



Stay connected



Twitter



Facebook



Email



MarineCadastre.gov

[View this email in your browser](#)